

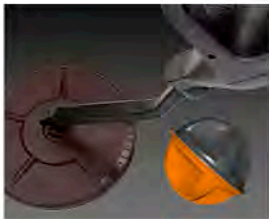
# Goldak EMS Marker Locating Products



# Goldak EMS Marker Products

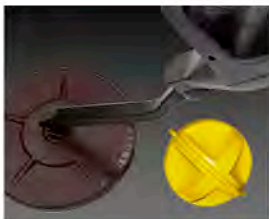
## TABLE OF CONTENTS

*Click product to access additional information.*



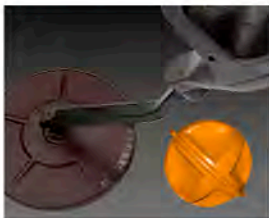
**ML-77 EMS LOCATOR  
CABLE TV**

**PURCHASE**



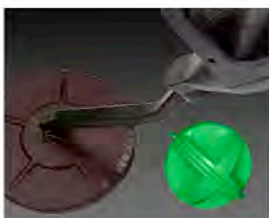
**ML-83 EMS LOCATOR  
GAS**

**PURCHASE**



**ML-1014 EMS LOCATOR  
TELEPHONE**

**PURCHASE**



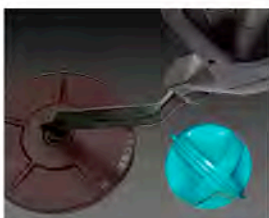
**ML-1216 EMS LOCATOR  
SANITATION/SEWER**

**PURCHASE**



**ML-1698 EMS LOCATOR  
POWER**

**PURCHASE**



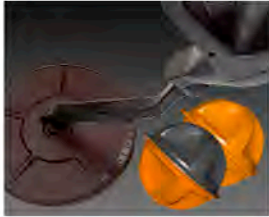
**ML-1457 EMS LOCATOR  
WATER**

**PURCHASE**

# Goldak EMS Marker Products

## TABLE OF CONTENTS

*Click product to access additional information.*



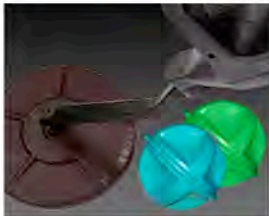
**MLX-CT DUAL FREQUENCY  
EMS LOCATOR  
CABLE TV & TELEPHONE**

**PURCHASE**



**MLX-GP DUAL FREQUENCY  
EMS LOCATOR  
GAS & POWER**

**PURCHASE**



**MLX-SW DUAL FREQUENCY  
EMS LOCATOR  
SANITATION & WATER**

**PURCHASE**

# Model MLX Series EMS Marker Locators



## Easy to Use Single Trigger EMS Marker Locators.

Designed with both cost and performance in mind, the Goldak Model MLX Series EMS Marker Locators detect and pinpoint standard Electronic Marker System (EMS) markers, at specified depths or greater. The unique instrument housing unfolds from a compact, easily storable form to a lightweight, ergonomic form that is easy to carry. Operation of the MLX series is simple, relying on the activation of a single trigger on the gun-style pistol grip. An internal microcontroller guarantees precise performance and provides other features such as marker depth approximation, auto-shutdown, and battery status monitoring. The dual-frequency MLX models automatically and simultaneously scan for both of two types of marker. The dual-frequency MLX can be custom built to any two frequencies.

## Applications:

Used in conjunction with standard electronic markers, the MLX locator provides a simple way to mark underground utilities and structures for future location. Typical candidates for using this type of marking system include:

- Utility Stub-Outs
- Buried Splices and load coils
- Buried manhole covers
- Septic tank access covers
- Survey points
- Pipe/conduit endings
- Utility trench paths

Of course, this marking system is not limited to the above applications, and can be used wherever buried items need to be marked.

- Completely Automatic: No Control Adjustments
- Bar Graphs for Pinpointing and Indicating Marker Depth
- Simple, Single-Trigger Operation (Click-On, Click Off)
- Ergonomic, Light-Weight Package
- Collapsible, Easy-to-store
- Robust and Distinct Audio Response When Detecting Marker
- Easy-to-See LED Display
- Continual Battery Status Indicator
- Output Jack For Optional Headphones

**LOCATE EMS DISKS,  
BALLS OR PEGS**



**GOLDAK**

INNOVATING UNDERGROUND LOCATING

# MLX SERIES EMS MARKER SPECIFICATIONS

## **DIMENSIONS**

Unfolded (Operating Position):  
33" Long

Folded (Storage Position):  
21" L x 11" W x 11.5" H

## **WEIGHT**

5 lbs.

## **SHIPPING WEIGHT**

9 lbs.

## **DETECTION RANGE**

Omnimarker: ..... 5.5 ft.  
"Full-Range" Marker: ..... 9 ft.  
Scotchmark 4" Ball ..... 4.5 ft.  
Near-Surface Marker ..... 2.25 ft.

## **OPERATING TEMPERATURE**

-4° to 70° C

## **STORAGE TEMPERATURE**

-55° to +150° C

## **BATTERIES**

8 "AA" 1.5V Alkaline Cells

## **BATTERY LIFE**

50 Hours

## **IDLE TIME BEFORE AUTO-SHUTDOWN**

5 Minutes

## **WARRANTY**

One year on manufacturing defects  
and workmanship

.....

## **ORDERING INFORMATION**

### ***Available Single-Frequency Models:***

<b>Model #</b>	<b>Locates Marker For</b>	<b>@ Frequency</b>
ML66	Reclaimed Water (Purple)	66.35 KHz
ML77	Cable TV (Orange/Black) and Canadian Telephone (Orange)	77.0 KHz
ML83	Gas (Yellow)	83.0 KHz
ML1014	Telephone (Orange)	101.4 KHz
ML1216	Sanitation/Sewer (Green)	121.6 KHz
ML1457	Water (Blue)	145.7 KHz
ML1698	Power (Red)	169.8 KHz

### ***Typical Dual-Frequency Models\*:***

<b>Model #</b>	<b>Locates Marker For</b>	<b>@ Frequency</b>
MLX-GP	Gas and Power	(See above)
MLX-SW	Sanitation and Water	(See above)

\*NOTE: Dual-frequency models may be custom-ordered for any two of the available marker frequencies



# GOLDAK

**Goldak, Inc.**

15835 Monte St., Unit 104 • Sylmar, CA 91342

818/367/0149 • 818/833/7694 fax • [www.goldak.com](http://www.goldak.com)